

PROVIDING GLOBAL ACCESS TO QUALITY MEDICAL CARE



M E D I C A L K I T S

Imres has the ideal medical kit solution for every international relief programme

imres



A STANDARDISED MEDICAL SOLUTION IN A BOX

Cholera kits are designed to help prepare for a potential outbreak and to support the first month of the initial response. Imres's cholera kits are tailor-made and designed according to WHO specifications, to prepare for outbreaks and to meet the needs for the initial response.

Imres supplies three different kits, each divided into several modules. The kits and modules can each be ordered separately. The kits are designed for the treatment of cholera patients within existing structures at the central, peripheral and community levels.

FAST & EFFICIENT

We know that delays can cost lives, so our logistics solutions are designed for speed and efficiency. If needed, we will provide transport services as well. We have a dedicated logistics team that arranges immediate shipment during emergencies. Our ability to offer extremely competitive freight costs, together with convenient quality packaging, ensures a safe, swift and seamless delivery to the cholera affected area.

ONE-STOP-SHOP

Imres keeps a minimum of 15 complete cholera kits in stock at all times. These can be shipped instantly. The kits are assembled and stored in our GDP-certified warehouse in the Netherlands, where we monitor the expiration dates to ensure a minimum of 12 months' remaining shelf life upon shipment.

While more than 35 years of experience has enabled us to identify the best and most reliable suppliers for each of our products, Imres strives to continuously improve, expand and innovate. We constantly source new products and suppliers. This ensures that we keep our range up to date, and that we consistently provide our customers with the best prices, products and quality.



QUALITY

You want to be sure that the products for your health programme are of high quality. We do not take any chances when it comes to the quality of the kits and products that we supply. Imres has implemented an uncompromising set of quality controls, including a dedicated quality control department and independent testing in World Health Organisation (WHO) pre-qualified and ISO/IEC 17025:2005 certified laboratories for pharmaceutical products. Our stringent vendor rating system sees Imres visiting and screening vendors around the world. Manufacturers must achieve our high, internationally recognised standards, and those of our customers, and must adhere to the necessary quality control processes to qualify as an Imres vendor. All our products are screened, to ensure the quality of every item that we supply.

FACTS ABOUT THE IMRES MEDICAL KITS



Over 1 million kits produced



10,000 kits in stock



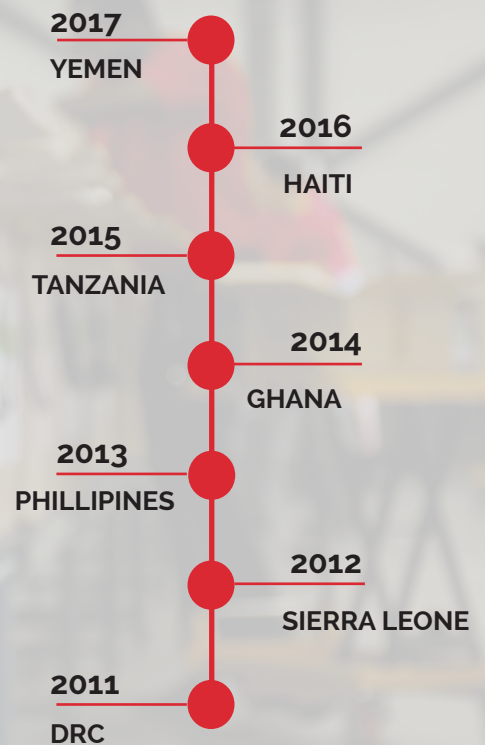
Sourced from 200+ quality manufacturers



24/7 emergency response



CHOLERA KIT DELIVERIES



CHOLERA KITS (CENTRAL REFERENCE, PERIPHERY AND COMMUNITY)

Art. Nr	Description
65265	kit, central reference, drugs module 1.1
65266	kit, central reference, renewable supplies module 1.2
65267	kit, central reference, equipment module 1.3
65269	kit, central reference, logistics module 1.4
65270	kit, central reference, documents and stationary module 1.5
65271	kit, periphery, drugs module. 2.1
65272	kit, periphery, renewable supplies module 2.2
65273	kit, periphery, equipment module 2.3
65274	kit, periphery, logisitics module 2.4
65275	kit, periphery, documents and stationary module 2.5
65276	kit, community, drugs module 3.1
65277	kit, community, ORP based care module 3.2
65278	kit, community, document module 3.3

CENTRAL REFERENCE KIT

The central kit contains the necessary equipment for the initial response to a cholera outbreak, at central level within an existing health structure such as a referral hospital or an already established Cholera Treatment Center (CTC). It is adapted to any structure where patients can be hospitalized and where health care professionals and equipment are present. It is designed for the treatment of 100 patients : 80 severe cases, requiring IV rehydration, and 20 mild/moderate cases, who should be given oral rehydration solutions only.

It is recommended that each central reference cholera kit is associated with 3 community kits to be dispatched in the surroundings of the hospital which will allow for the majority of moderate patients to be treated at the community level.

PERIPHERY KIT

The periphery kit contains the necessary equipment for the initial response to a cholera outbreak at periphery level within an existing health structure with in patients facility such as a cholera treatment unit (CTU) or a health center (HC). It is designed for the treatment of 100 patients: 40 severe cases and 60 mild/moderate cases.

It is recommended that each periphery kit is associated with at least 1 community kit

COMMUNITY KIT, ORP

The community kit contains the necessary equipment for the initial response to a cholera outbreak at community level. Its small volume allows for rapid deployment to improve access to ORS closest to the affected population. It is adapted to all settings and should be set-up nearby an existing structure with access to latrines and clear water. It can be monitored by trained community members.

The community kit is designed to support a small place set up for an average of 40 patients maximum per day. It is subdivided into 3 modules which include medical and logistic material for the oral rehydration of 100 mild/moderate cases which can be ordered separately.



CHOLERA KIT CENTRAL REFERENCE, DRUGS MODULE 1.1 (65265)
800 KG, 1.8 CBM

Description	Quantity	Unit	Form
oral rehydration salts, low osmolarity (2004 WHO formula), 20.5 g (for 1 litre) sachet	10	100	sach.
paracetamol 100 mg oral use tablet (blister)	1	100	tabs.
paracetamol 500 mg oral use tablet (blister)	2	100	tabs.
Hartmann's solution (Ringer's lactate) intravenous infusion, 500 ml (nipple head) bottle	1280	1	pce.
dextrose 5% parenteral use solution for infusion 500 ml bottle (nipple head)	20	1	pce.
dextrose 50% in water, 50 ml	1	20	vials
doxycycline hyclate 100 mg oral use film-coated tablet (blister)	3	100	pce.
azithromycin dihydrate 200 mg base/5 ml oral use oral suspension 15 ml bottle	8	1	pce.
water purification tablets (sodium dichloroisocyanurate 67 mg, 1 tablet/8-10 litres)	280	10	pce.
povidone iodine 10% cutaneous use cutaneous solution 200 ml bottle	5	1	pce.
zinc sulphate 20 mg base oral use dispersible tablet (blister 10 x 10)	3	100	pce.
potassium chloride 100 mg/ml, 10 ml	2	50	amps.

CHOLERA KIT CENTRAL REFERENCE, RENEWABLE SUPPLIES MODULE 1.2, CONTINUES ON NEXT PAGE
(65266) 75 KG, 0.4 CBM

Description	Quantity	Unit	Form
catheter, I.V., with wings and injection port, 14 G x 1.75" (orange), sterile, disposable	1	100	pcs.
catheter, I.V., with wings and injection port, 16 G x 1.7" (grey), sterile, disposable	1	50	pcs.
catheter, I.V., with wings and injection port, 18 G x 1.3" (green), sterile, disposable	2	50	pcs.
catheter, I.V., with wings and injection port, 20 G x 1.1" (pink), sterile, disposable	1	50	pcs.
catheter, I.V., with wings and injection port, 22 G x 0.9" (blue), sterile, disposable	2	50	pcs.
catheter, I.V., with wings and injection port, 24 G x 0.75" (yellow), sterile, disposable	1	50	pcs.
infusion giving set, with airrelease and Luer lock needle, 21 G x 1.5" (0.80 x 40 mm) (for bags/bottles), driprate 20 drops/ml, 150 cm tubing, sterile, disposable	340	1	pce.
stopcock, 3-way, sterile, disposable	7	50	pcs.
catheter, Foley balloon, 2-way, silicone coated, 5 ml, CH 10 (paediatric), sterile, disposable	1	10	pcs.
catheter, Foley balloon, 2-way, silicone coated, 10 ml, CH 12, sterile, disposable	1	10	pcs.
catheter, Foley balloon, 2-way, silicone coated, 10 ml, CH 14, sterile, disposable	1	10	pcs.
catheter, Foley balloon, 2-way, silicone coated, 10 ml, CH 18, sterile, disposable	1	10	pcs.
urinal drainage bag, 2000 ml, 85 cm tube, with non-return valve and tap, sterile, disposable	50	1	pcs.
scalp vein infusion set 21 G (0.80 mm), 30 cm tubing, sterile, disposable	1	100	pcs.
scalp vein infusion set 25 G (0.50 mm), 30 cm tubing, sterile, disposable	1	100	pcs.
(burn)box for used syringes and needles, 5 litres	4	1	pce.
elastic gauze bandages, 8 cm x 4 m (stretched), 26 g/m ²	24	1	roll
cotton wool, 500 g (100 % pure cotton)	5	1	roll
zinc oxide plaster 2.5 cm x 5 m, on plastic spool	2	10	roll
gauze pads 10 x 10 cm, 12 ply, N17, 23 g/m ² , non-sterile	3	100	pcs.
gloves, examination, nitrile, size large, blue, powderfree, non-sterile, disposable	2	200	pcs.
gloves, examination, nitrile, size medium, non-sterile, disposable	4	200	pcs.
gloves, examination, nitrile, size small, non-sterile, disposable	2	200	pcs.
gloves, surgical, latex, size 6.5, powdered, sterile, disposable	1	50	pair
gloves, surgical, latex, size 7.5, powdered, sterile, disposable	1	50	pair
gloves, surgical, latex, size 8.5, powdered, sterile, disposable	1	50	pair



CHOLERA KIT CENTRAL REFERENCE, RENEWABLE SUPPLIES MODULE 1.2, (65266)
75 KG, 0.4 CBM

Description	Quantity	Unit	Form
soap, toilet, 100 g	25	10	bar
tube, feeding (nasogastric), CH 12, 125 cm, sterile, disposable	3	1	pcs.
tube, feeding (nasogastric), CH 16, 125 cm, sterile, disposable	3	1	pcs.
tube, feeding (nasogastric), CH 5, 40 cm, sterile, disposable	5	1	pcs.
tube, feeding (nasogastric), CH 8, 40 cm, sterile, disposable	10	1	pcs.
tube, feeding (nasogastric), CH 12, 125 cm, sterile, disposable	10	1	pcs.
tube, feeding (nasogastric), CH 16, 125 cm, sterile, disposable	3	1	pcs.
syringe, catheter tip, 50/60 ml, sterile, disposable	1	25	pcs.
syringe, hypodermic, Luer, 50 ml, excentric tip, sterile, disposable	30	1	pcs.
syringe, hypodermic, Luer, 2-part, 10 ml, sterile, disposable	1	100	pcs.
medium, Cary-Blair, pure viscose tipped swabs, peel pouch pack	10	1	pcs.
container, specimen, 120 ml, with screw cap, plastic	10	1	pce.

CHOLERA KIT CENTRAL REFERENCE, EQUIPMENT MODULE 1.3, (65267)
35 KG, 0.2 CBM

Description	Quantity	Unit	Form
weighing scale, mother/child function, 180 kg/50-100 g, electronic, battery-operated (868) (S.P. A123 NOT RESTRICTED)	1	1	pce.
weighing scale, infant, hanging model, electronic, 25 kg, graduation 20 g, automatic shutoff, operating on 2 AA batteries(incl) (OS-25)	1	1	pce.
blood glucose meter	1	1	pce.
blood glucose test strips	2	50	pcs.
razor, double blades, single-edged, with handle & cover, disposable	1	10	pcs.
scissors, surgical, Deaver, straight, 14 cm, s/b	2	1	pair
forceps, haemostatic, Kocher, 1x2 teeth, straight, 14 cm	2	1	pce.
kidney basin, 25 cm, 825 ml, stainless steel	2	1	pce.
tray, dressing, 300 x 200 x 30 mm, without lid, stainless steel	5	1	pce.
splint, Cramer, 100 x 12 cm	30	1	pce.
splint, Cramer, 60 x 10 cm	5	1	pce.
tourniquet, rubber, appr. 100 cm	5	1	pce.
stethoscope, binaural, standard, dual head	4	1	pce.
sphygmomanometer, aneroid, 300 mm Hg, with adults cuff	4	1	pce.
sphygmomanometer, aneroid, 300 mm Hg, with childrens cuff	2	1	pce.
thermometer, electronic, digital display, range 35.5-42.9°C	5	1	pce.
brush, hand, surgeon's, plastic block with nylon bristles, autoclavable	5	1	pce.
bodybag, 250 x 120 cm, 300 micron, non-PVC/non-degradable, U-shaped zipper, white, 6 handles	5	1	pce.
bodybag, 150 x 100 cm, white, 12 mil (+/-300 micron), U-shape zipperlock, with document pouch/4 handles	3	1	pce.
blanket, rescue, 210 x 160 cm, gold/silver (heat/cold protection)	5	1	pce.

CHOLERA KIT CENTRAL REFERENCE, LOGISTICS MODULE 1.4, (65269)
35 KG, 0.2 CBM

Description	Quantity	Unit	Form
bed, cholera, steel frame with adult polyester sleeping mat, weight tolerance max. 159 kg, dimensions 207,5 x 82,5 x 54 cm, in orange carrying bag	10	1	pce.
jerrycan, food grade LDPE, foldable, 10 litres, with built-in handle & tap, temperature resistant -20 to 50°C	16	1	pce.
container, food proof plastic, 125 litres, with tap & lid	3	1	pce.
jerrycan, food grade LDPE, foldable, 10 litres, with built-in handle & tap, temperature resistant -20 to 50°C	8	1	pce.
rope, polypropylene, diameter 5mm, 100 m	2	1	reel
mop with bucket and wringer	4	1	pce.
waste bucket (receptable), 12 litres, plastic, with step-on foot lever	8	1	pce.
gloves, kitchen, rubber, size medium, non-disposable	20	1	pair
bucket, plastic (HDPE), 14 litres, with clip cover and 52 mm outlet/tap (oxfam bucket)	4	1	pce.
cup, plastic, 250 ml, graduated, with handle	25	1	pce.
plate, 2 cm deep, food grade plastic, 255 mm diameter	25	1	pce.
spoon, multi-use/soup, 15 ml, food grade plastic, disposable	1	100	pce.
bucket, plastic, 12 litres, black, heavy duty, litre scale	90	1	pce.
blanket, rescue, 210 x 160 cm, gold/silver (heat/cold protection)	30	1	pce.
water purification granules (sodium dichloroisocyanurate dihydrate), 1 kg (UN3077 / 9 / III - exempted for IATA/IMDG)	10	1	jar
apron, surgical, plastic, heavy duty, 68 x 118 cm, reusable	20	1	pce.
sprayer, insecticides, 12 litres, polypropylene tank, backpack model	4	1	pce.
safety net, plastic, 1.2 x 50 m, tensile strength 5KN/M, orange, roll	3	1	rolls
pool tester, Chl + pH LR., includes foil packed tablets for up to 20 tests and instruction manual	2	1	set.
chlorine test tablets, DPD1 (free chlorine)	1	500	pce.
chlorine test tablets, DPD3 (total chlorine)	1	100	pce.
phenol red tablets, for chlorine testing	1	500	pcs.
boots, PVC, black, height 38.5 cm, size 39	1	1	pair
boots, PVC, black, height 38.5 cm, size 42	2	1	pair
boots, PVC, black, height 38.5 cm, size 44	2	1	pair
scrub set, unisex, water repellent non-woven fabric (SMMS), V-neck top & pants, blue, size small	5	1	pcs.
scrub set, unisex, water repellent non-woven fabric (SMMS), V-neck top & pants, blue, size medium	15	1	pcs.
scrub set, unisex, water repellent non-woven fabric (SMMS), V-neck top & pants, blue, size large	10	1	pcs.
bag, plastic, biohazardous materials, size 75 x 91 cm (30 x 36"), thickness 50 µm, yellow, 50 litres	100	1	pcs.
solar light, torch/room light, 15/60/120 lumen, 2W solar panel & USB port charger with 3 phone adaptors	12	1	pcs.

CHOLERA KIT CENTRAL REFERENCE, DOCUMENTS & STATIONARY MODULE 1.5, (65270)
10 KG, 0.05 CBM

Description	Quantity	Unit	Form
notebook A-4, spiral-back	5	1	pce.
pen, ballpoint, blue	10	1	pce.
pocket calculator, solar	1	1	pce.
marker, permanent, W10, square tip, black	10	1	pce.
patient register book	1	1	pce.
patient registration cards	100	1	pcs.
poster, 'Cholera Alert, English, A4, colour	1	1	pce.
USB stick, 'Cholera Reference Documents	1	1	pce.

CHOLERA KIT PERIPHERY, DRUGS MODULE 2.1 (65271)
420 KG, 0.1 CBM

Description	Quantity	Unit	Form
oral rehydration salts, low osmolarity (2004 WHO formula), 20.5 g (for 1 litre) sachet	10	100	pce.
paracetamol 100 mg oral use tablet (blister)	1	100	pce.
paracetamol 500 mg oral use tablet (blister)	2	100	pce.
Hartmann's solution (Ringer's lactate) intravenous infusion, 500 ml (nipple head) bottle	640	1	pce.
dextrose 5% parenteral use solution for infusion 500 ml bottle (nipple head)	20	1	pce.
doxycycline hyclate 100 mg oral use film-coated tablet (blister)	3	100	pce.
azithromycin dihydrate 200 mg base/5 ml oral use oral suspension 15 ml bottle	8	1	pce.
water purification tablets (sodium dichloroisocyanurate 67 mg, 1 tablet/8-10 litres)	280	10	pce.
povidone iodine 10% cutaneous use cutaneous solution 200 ml bottle	5	1	pce.
zinc sulphate 20 mg base oral use dispersible tablet (blister 10 x 10)	3	100	pce.

CHOLERA KIT PERIPHERY, RENEWABLE SUPPLIES MODULE 2.2, CONTINUES ON NEXT PAGE (65272)
70 KG, 0.25 CBM

Description	Quantity	Unit	Form
catheter, I.V., with wings and injection port, 16 G x 1.7" (grey), sterile, disposable	1	50	pce.
catheter, I.V., with wings and injection port, 18 G x 1.3" (green), sterile, disposable	1	50	pce.
catheter, I.V., with wings and injection port, 22 G x 0.9" (blue), sterile, disposable	1	50	pce.
catheter, I.V., with wings and injection port, 24 G x 0.75" (yellow), sterile, disposable	1	50	pce.
infusion giving set, with airrelease and Luer lock needle, 21 G x 1.5" (0.80 x 40 mm) (for bags/bottles), driprate 20 drops/ml, 150 cm tubing, sterile, disposable	180	1	pce.
stopcock, 3-way, sterile, disposable	4	50	pce.
catheter, Foley balloon, 2-way, silicone coated, 10 ml, CH 12, sterile, disposable	1	10	pce.
catheter, Foley balloon, 2-way, silicone coated, 10 ml, CH 14, sterile, disposable	1	10	pce.
catheter, Foley balloon, 2-way, silicone coated, 10 ml, CH 18, sterile, disposable	1	10	pce.
urinal drainage bag, 2000 ml, 85 cm tube, with non-return valve and tap, sterile, disposable	30	1	pce.
scalp vein infusion set 21 G (0.80 mm), 30 cm tubing, sterile, disposable	1	100	pce.
scalp vein infusion set 25 G (0.50 mm), 30 cm tubing, sterile, disposable	1	100	pce.
(burn)box for used syringes and needles, 5 litres	4	1	pce.
elastic gauze bandages, 8 cm x 4 m (stretched), 26 g/m ² roll	24	1	pce.
cotton wool, carded, 500 g (100 % pure cotton) roll	5	1	pce.
zinc oxide plaster 2.5 cm x 5 m, on plastic spool roll	2	10	pce.
gauze pads 10 x 10 cm, 12 ply, N17, 23 g/m ² , non-sterile	3	100	pce.
gloves, examination, nitrile, size large, blue, powderfree, non-sterile, disposable	2	200	pce.
gloves, examination, nitrile, size medium, non-sterile, disposable	4	100	pce.
gloves, examination, nitrile, size small, non-sterile, disposable	2	100	pce.
gloves, surgical, latex, size 6.5, powdered, sterile, disposable pair	10	1	pce.
gloves, surgical, latex, size 7.5, powdered, sterile, disposable pair	1	50	pce.
gloves, surgical, latex, size 8.5, powdered, sterile, disposable pair	10	1	pce.
soap, toilet, 100 g bar	25	10	pce.

CHOLERA KIT PERIPHERY, RENEWABLE SUPPLIES MODULE 2.2, (65272)
70 KG, 0.25 CBM

Description	Quantity	Unit	Form
tube, feeding (nasogastric), CH 16, 125 cm, sterile, disposable	3	1	pce.
tube, feeding (nasogastric), CH 5, 40 cm, Luer/conical tip, sterile, disposable	5	1	pce.
tube, feeding (nasogastric), CH 8, 40 cm, Luer/conical tip, sterile, disposable	10	1	pce.
tube, feeding (nasogastric), CH 12, 125 cm, sterile, disposable	10	1	pce.
tube, feeding (nasogastric), CH 16, 125 cm, sterile, disposable	3	1	pce.
syringe, catheter tip, 3-part, 50/60 ml, sterile, disposable	1	25	pce.
syringe, hypodermic, Luer, 50 ml, excentric tip, sterile, disposable	20	1	pce.
syringe, hypodermic, Luer, 2-part, 10 ml, sterile, disposable	1	100	pce.
medium, Cary-Blair, pure viscose tipped swabs, peel pouch pack	10	1	pce.
container, specimen, 120 mL with screw cap, plastic	10	1	pce.

CHOLERA KIT PERIPHERY, EQUIPMENT MODULE 2.3, (65273)
25 KG, 0.1 CBM

Description	Quantity	Unit	Form
weighing scale, mother/child function, double display, 200 kg/100 g (50 g< 150 kg > 100 g), electronic, battery-powered (6 x AA, included), slip proof surface, with carrying case	1	1	pce.
weighing scale, infant, hanging model, electronic, 25 kg, graduation 20 g, automatic shutoff, operating on 2 AA batteries(incl)	1	1	pce.
blood glucose meter	1	1	pce.
blood glucose test strips	2	50	pce.
razor, double blades, single-edged, with handle & cover, disposable	1	10	pce.
scissors, surgical, Deaver, straight, 14 cm, s/b pair	2	1	pce.
forceps, haemostatic, Kocher, 1x2 teeth, straight, 14 cm	2	1	pce.
kidney basin, 25 cm, 825 ml, stainless steel	2	1	pce.
tray, dressing, 300 x 200 x 30 mm, without lid, stainless steel	5	1	pce.
splint, Cramer, 60 x 10 cm	3	1	pce.
splint, Cramer, 40 x 8 cm	3	1	pce.
tourniquet, rubber, appr. 100 cm	5	1	pce.
stethoscope, binaural, standard, dual head	2	1	pce.
sphygmomanometer, aneroid, 300 mm Hg, with adults cuff	2	1	pce.
thermometer, electronic, digital display, range 35.5-42.9°C, accuracy 0.1°C, low battery-indicator	5	1	pce.
brush, hand, surgeon's, plastic block with nylon bristles, autoclavable	2	1	pce.
bodybag, 210 x 110 cm, 300 micron, non-PVC/non-degradable, U-shaped zipper, white, 6 handles	5	1	pce.
blanket, rescue, 210 x 160 cm, gold/silver (heat/cold protection)	5	1	pce.

CHOLERA KIT PERIPHERY, LOGISTICS MODULE 2.4, (65274)

35 KG, 0.2 CBM

Description	Quantity	Unit	Form
bed, cholera, steel frame with adult polyester sleeping mat, weight tolerance max. 159 kg, dimensions 207,5 x 82,5 x 54 cm, in orange carrying bag	5	1	pce.
jerrycan, food grade LDPE, foldable, 10 litres, with built-in handle & tap, temperature resistant -20 to 50°C	16	1	pce.
container, food proof plastic, 125 litres, with tap & with lid	3	1	pce.
jerrycan, food grade LDPE, foldable, 10 litres, with built-in handle & tap, temperature resistant -20 to 50°C	8	1	pce.
rope, polypropylene, diameter 5 mm, 100 m roll	2	1	pce.
mop with bucket and wringer	4	1	pce.
waste bucket (receptable), 12 litres, plastic, with step-on foot lever	8	1	pce.
gloves, kitchen, rubber, size medium, non-disposable pair	20	1	pce.
bucket, plastic (HDPE), 14 litres, with clip cover and 52 mm outlet/tap (oxfam bucket)	4	1	pce.
cup, plastic, 250 ml, graduated, with handle	25	1	pce.
plate, 2 cm deep, food grade plastic, 255 mm diameter	25	1	pce.
spoon, multi-use/soup, 15 ml, foodgrade plastic, disposable	2	20	pce.
bucket, plastic, 12 litres, black, heavy duty, litre scale	45	1	pce.
blanket, rescue, 210 x 160 cm, gold/silver (heat/cold protection)	30	1	pce.
loincloth, 100 % cotton fabric	20	1	pce.
water purification granules (sodium dichloroisocyanurate dihydrate), 1 kg (UN3077 / 9 / III - exempted for IATA/IMDG) jar	5	1	pce.
apron, surgical, plastic, heavy duty, 68 x 118 cm, reusable	10	1	pce.
sprayer, insecticides, 12 litres, polypropylene tank, backpackmodel	4	1	pce.
safety net, plastic, 1,2 x 50 m, tensile strength 5kN/m, orange roll	3	1	pce.
pool tester, Chl + pH LR., includes foil packed tablets for up to 20 tests and instruction manual, set	2	1	pce.
chlorine test tablets, DPD1 (free chlorine)	1	500	pce.
chlorine test tablets, DPD3 (total chlorine)	1	100	pce.
phenol red tablets, for chlorine testing	1	500	pce.
boots, PVC, black, height 38.5 cm, size 39 pair	1	1	pce.
boots, PVC, black, height 38.5 cm, size 42 pair	2	1	pce.
boots, PVC, black, height 38.5 cm, size 44 pair	2	1	pce.
scrub set, unisex, water repellent non-woven fabric (SMMS), V-neck top & pants, blue, size small	3	1	pce.
scrub set, unisex, water repellent non-woven fabric (SMMS), V-neck top & pants, blue, size medium	10	1	pce.
scrub set, unisex, water repellent non-woven fabric (SMMS), V-neck top & pants, blue, size large	5	1	pce.
bag, plastic, biohazardous materials, size 75 x 91 cm (30 x 36"), thickness 50 µm, yellow, 50 litres	1	100	pce.
solar light, torch/room light, 15/60/120 lumen, 2W solar panel & USB port charger with 3 phone adaptors	4	1	pce.

CHOLERA KIT PERIPHERY, DOCUMENTS & STATIONARY MODULE 2.5, (65275)

5 KG, 0.05 CBM

Description	Quantity	Unit	Form
information note, cholera kits, WHO 2015, English	2	1	pce.
notebook A-4, spiral-back	5	1	pce.
pen, ballpoint, blue	10	1	pce.
pocket calculator, solar	1	1	pce.
marker, permanent, W10, square tip, black	10	1	pce.
notepad A-4, hard cover, 160 pages	1	1	pce.
patient registration cards	100	1	pce.
poster, 'Cholera Alert, English, A4, colour	1	1	pce.
USB stick, 'Cholera Periphery Documents'	1	1	pce.

CHOLERA KIT COMMUNITY, DRUGS MODULE 3.1 (65276)
30 KG, 0.1 CBM

Description	Quantity	Unit	Form
oral rehydration salts, low osmolality (2004 WHO formula), 20.5 g (for 1 litre) sachet	10	100	pce.
zinc sulphate 20 mg base oral use dispersible tablet (blister 10 x 10)	3	100	pce.

CHOLERA KIT COMMUNITY, ORP BASED CARE MODULE 3.2, (65277)
30 KG, 0.25 CBM

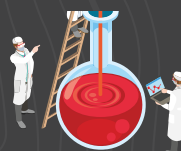
Description	Quantity	Unit	Form
notepad A-5	1	1	pce.
pen, ballpoint, blue	5	1	pce.
cup, plastic, 250 ml, graduated, with handle	40	1	pce.
cup, plastic, 500 ml, without handle	40	1	pce.
spoon, multi-use/soup, 15 ml, foodgrade plastic, disposable	1	20	pce.
jug, measuring, 1 litre, graduated, with beak and handle, polypropylene	7	1	pce.
water filter, 2 x polypropylene container with lid, flow rate 2 litres/hour, 2 Sterasyl ceramic candle filters, dispensing tap and pictorial instruction sheet, life capacity 20,000 litres	1	1	pce.
bucket, plastic (HDPE), 14 litres, with clip cover and 52 mm outlet/tap (oxfam bucket)	7	1	pce.
jerrycan, food grade LDPE, foldable, 10 litres, with built-in handle & tap, temperature resistant -20 to 50°C	2	1	pce.
soap, toilet, 100 g bar	10	10	pce.
water purification tablets (sodium dichloroisocyanurate 67 mg, 1 tablet/8-10 litres)	40	10	pce.
syringe, hypodermic, Luer, 2-part, 10 ml, sterile, disposable	1	100	pce.
gloves, examination, nitrile, size medium, non-sterile, disposable	2	100	pce.
gloves, kitchen, rubber, size medium, non-disposable pair	5	1	pce.
spoon, stirring, wood, 30 cm	1	1	pce.
rope, polypropylene, 3 mm x 5 m	2	1	pce.
brush, hand, surgeon's, plastic block with nylon bristles, autoclavable	2	1	pce.

CHOLERA KIT COMMUNITY, DOCUMENTS & STATIONARY MODULE 3.3, (65278)
1 KG, 0.001 CBM

Description	Quantity	Unit	Form
information note, cholera kits, WHO 2015, English	2	1	pce.
poster, 'Cholera Alert, English, A4, colour	3	1	pce.
USB stick, 'Cholera Community Documents'	1	1	pce.



THE IMRES DIFFERENCE



+ Over more than **35 years**, Imres has proved that we are a **reliable, efficient and trusted partner** in **healthcare strengthening programmes** in developing countries.



+ As an organisation, we are big enough to **make a difference**, but small enough to give our customers personal attention, and to care about the difference that we are making in lives and communities, and in our partners' health projects.



+ We have **offices and facilities** in the **Netherlands, Dubai, India, Canada, China** and the **Democratic Republic of Congo**.



+ Our **production areas** include a **GMP room** for secondary packing and a **Class D clean room** for primary packaging, as well as a **450 m² kit production area**. As a supplier, we do not make promises that we cannot keep. If we commit to a project and specific deliverables, it is because we really can deliver, as promised.



+ Like the projects that we are **proud** to be part of, Imres has heart. We are good at what we do, but we also feel good about what we do. We feel responsible for our partners' projects until each one ends **successfully**.



+ Then we move onto our **next challenge**; our next opportunity to turn humanitarian dreams into **concrete solutions** and **decisive action** that saves lives.